

395x395mm

**Coral**
CERAMIC PVT. LTD.





Visit Us www.coralceramics.com
Email :- info@coralceramic.com

About Us :-

On 20 September 2004, Coral attained Quality System Administration certification based on the most rigorous quality controls at all stage of production in optimum condition on, or before time Obtaining this certification was, for us, the result of teamwork and it means that we can give our customers the guarantee of total quality they deserve. In Coral we are now in a position to go a step further. We are working on adapting our quality control system to the AN-ISO 9001:2000 standard which, as well as covering the standards already achieved through the ISO 9001 standard covers other aspects such as design control, the evaluation of customer satisfaction and the pre-empting of customer expectations.

These will enable us to respond before. Our aim is to demonstrate that Coral will always continue to be synonymous with quality. Welcome to a world limited only by your imagination Creativity and innovative skills. A world where you can spread your wings and find a myriad ways to express your wildest design fantasies. The world of Coral Ceramic, pioneers ans one of the largest selling designer tiles company. In the following pages you will be introduced to the latest collection of the rarest, most unconventional and imaginative designer tiles you'd have ever up your eyes on.



Coral
CERAMIC PVT. LTD.

Digital
FLOOR TILES



1

Glossy Series



2

Plain Rustic



3

Punch Rustic



6001



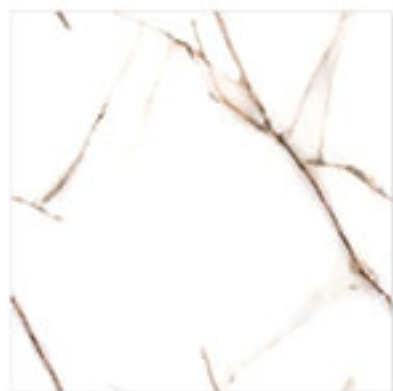
6002



6003



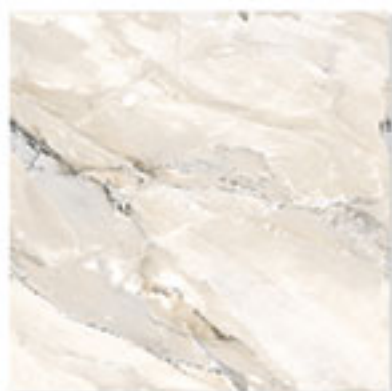
6004



6005



6006



6007



6008



www.coralceramics.com



Coral
CERAMIC PVT. LTD.





6009



6010



6011



6012



6013



6014



6015



6016



www.coralceramics.com

The logo for Coral Ceramic Pvt. Ltd. features the word "Coral" in a bold, blue, sans-serif font. Above the letter "o" are three small diamond shapes in red, black, and blue. Below "Coral" is the text "CERAMIC PVT. LTD." in a smaller, black, sans-serif font.

Coral
CERAMIC PVT. LTD.





6017



6018



6019



6020



6021



6022



6023



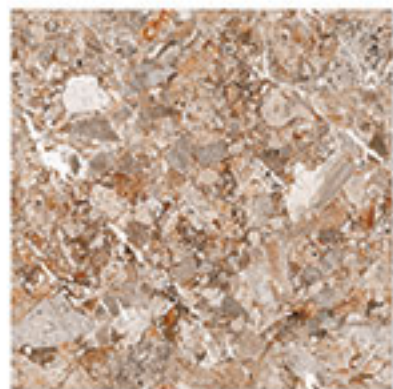
6024



www.coralceramics.com

Coral
CERAMIC PVT. LTD.





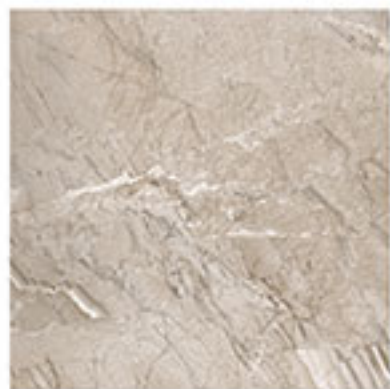
6025



6026



6027



6028



6029



6030



6031



6032



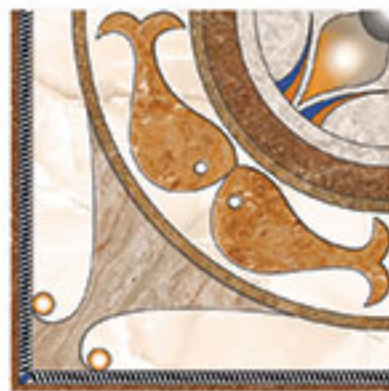
www.coralceramics.com

Coral
CERAMIC PVT. LTD.





6033



6034



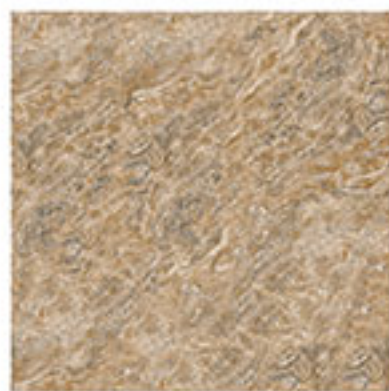
6036



6037



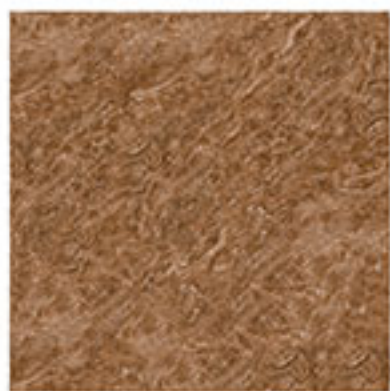
6038



6039



6040



6041

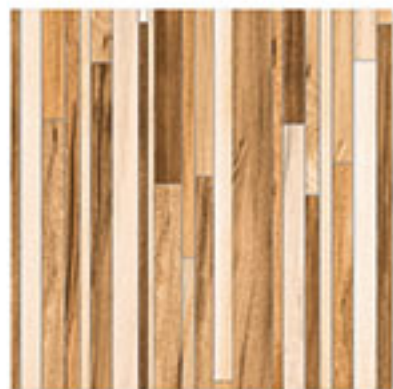


www.coralceramics.com

Coral
CERAMIC VV1 LTD



6035



7001



7002



7003



7004



7005



7006



7007



7008







7009



7010



7011



7012



7013



7014



7015



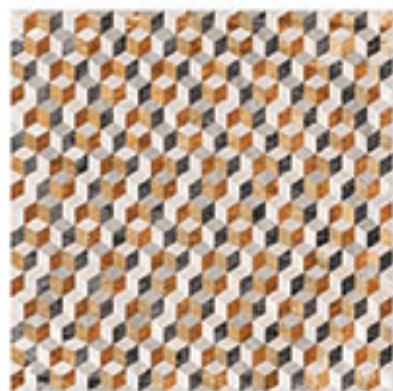
7016



www.coralceramics.com

Coral
CERAMIC PVT. LTD.





7017



7018



7019



7020



7021



7022



7023



7024



www.coralceramics.com

Coral
CERAMIC PVE, LTD.





7025



7026



7027



7028



7029



7030



7031



7032



www.coralceramics.com

Coral
CERAMIC PVT. LTD.





7033



7034



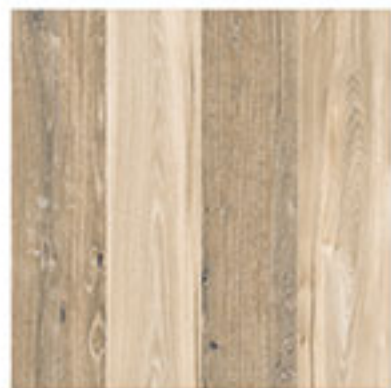
7035



7036



7037



7038



7039



7040



www.coralceramics.com

Coral
CERAMICS





7041



7042



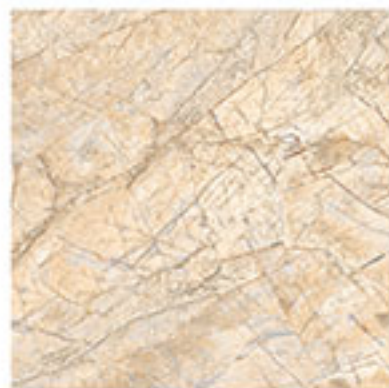
7043



7045



7046



7047



7048



7049



www.coralceramics.com

Coral
CERAMIC PVT. LTD.



7044



8001



8002



8003



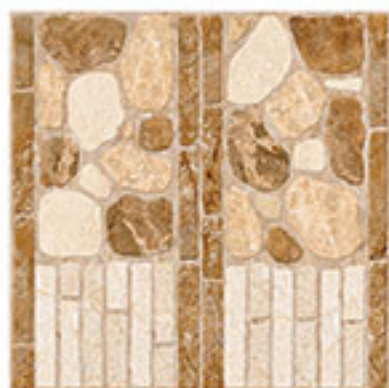
8004



8005



8006



8007



8008



www.coralceramics.com

Coral
CERAMIC PVT. LTD.





8009



8010



8011



8012



8013



8014



8015



8016







8017



8018



8019



8020



8021



8022



8023



8024



www.coralceramics.com

Coral
CERAMIC PVT. LTD.





8025



8026



8027

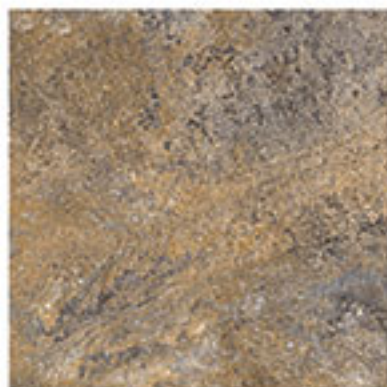


8028





8029



8030

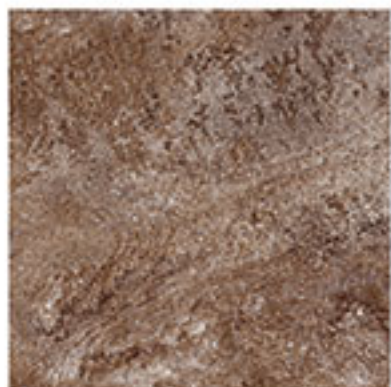


8033



8036

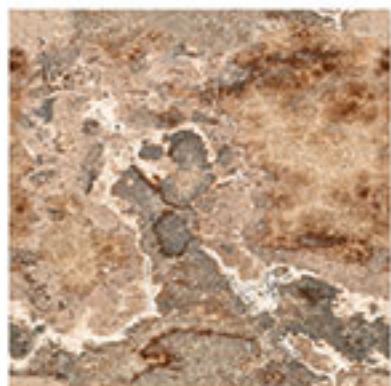




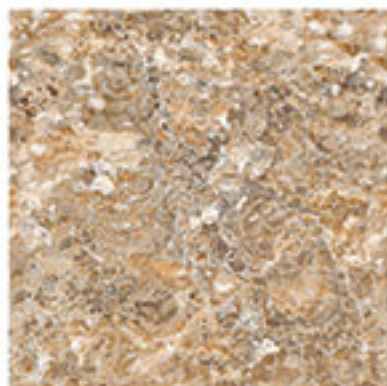
8031



8032



8034



8035



MFG. FLOOR TILES

8-A National Highway, Lalpur, Morbi-363 642.
Phone > +91-2822-240305
Fax > +91-2822-241040 / +91-11-47818000
Call > +91-9879010024

www.coralceramics.com

coral_ceramics@yahoo.co.in

info@coralceramic.com

CHARACTERISTICS	FLOOR		METHOD OF TESTING
	EUROPEAN STD. EN 1778 11A, IS 13755	CORAL FLOOR TILES SPECIFICATIONS	
PHYSICAL DIMENSIONS			
1. Deviation in length	± 0.5% max.	± 0.5% max.	EN 99, BS 6431 part 10, IS 13630 part 1
2. Deviation in thickness	± 5.0% max.	± 4.0% max.	- same as above
3. Straightness of sides	+ 0.5% max.	+ 0.3% max.	- same as above
4. Rectangularity	+ 0.6% max.	+ 0.3% max.	- same as above
5. Surface flatness (warpage)	+ 0.5% max.	+ 0.5% max.	- same as above
6. Surface quality	Minimum 95% of tiles free from defects	Minimum 95% of tiles free from defects	- same as above
PHYSICAL PROPERTIES			
1. Water absorption (%) (E)	3% <E<6%	below 0%	EN 99, BS 6431 part 11, IS 13630 part 2
2. Bending strength (N/sq. Mm)	>22 Average 20 min. Minimum 5	above 260 Kg/cm ² Minimum 5	EN 100, BS 6431 part 12, IS 13630 part 6
3. Scratch hardness (Mohs) > =3	To be specified by the manufacturer	Class 3	EN 101, BS 6431 part 13, IS 13630 part 13
4. Resistance to surface abrasion	Minimum 2 cycles	Minimum 3 cycles	EN 154, BS 6431 part 20, IS 13630 part 2
5. Cracking resistance			IS 13630 part 9
CHEMICAL PROPERTIES			
1. Resistance to staining	Minimum class 2	Minimum class 2	EN 122 (3, 1), IS 13630 part 8
2. Resistance to household chemical	Minimum class B	Minimum class B	EN 122 (3, 2), IS 13630 part 8
THERMAL PROPERTIES			
1. Thermal shock resistance	Required	Resistant as per STD	EN 104, BS 6431 part 16, IS 13630 part 5
2. Thermal expansion	Max. 9×10^{-5} for 100c	Max. 9×10^{-5} for 100c	EN 103, BS 6431 part 15, IS 13630 part 4

Note

A beautiful floor is considered by many as the most vital element of construction. It's what any visitor sees first. And most importantly, once laid, a floor seldom changes. It must therefore not only be beautiful but also remain its beauty for years to come. But floors are subject to the daily grind & rigors of foot traffic, and to stains, ink stains, grease stains, etc. Even the best of the tiles will stain if not maintained. Fortunately the solution is not completely futile, or at least in tandem with leading research laboratories there are several solutions for these stains.

APPLICATIONS



www.coralceramics.com

coral_ceramics@yahoo.co.in

info@coralceramic.com